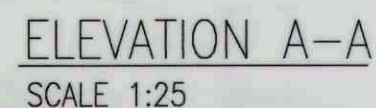


1. CONCRETE STRENGTH REQUIRED AT 28 DAYS:  
a) STRUCTURAL CONCRETE: 25 MPa  
b) BLINDING AND SCREED: 15 MPa
2. MAXIMUM SIZE OF COARSE AGGREGATE TO BE 26.5mm
3. CURING OF CONCRETE SHALL BE CARRIED OUT STRICTLY IN ACCORDANCE WITH SANS 2001 CC1
4. STRIPPING TIMES OF SHUTTERING SHALL BE IN ACCORDANCE WITH SANS 2001 CC1
5. CURING METHOD STATEMENT TO BE APPROVED BY CIVIL DESIGN ENGINEER
6. ONLY CONCRETE COVER BLOCKS TO BE USED ON SITE
7. ALL EXPOSED SHARP EDGES TO HAVE 20 x 20mm CHAMFER
8. CONCRETE FINISHES TO TOP OF PLINTH TO HAVE A SMOOTH WOOD FLOATED FINISH
9. ALL CAST IN ITEMS TO BE SUPPLIED BY CONTRACTOR UNLESS OTHERWISE NOTED



FOR TENDER PURPOSES

A